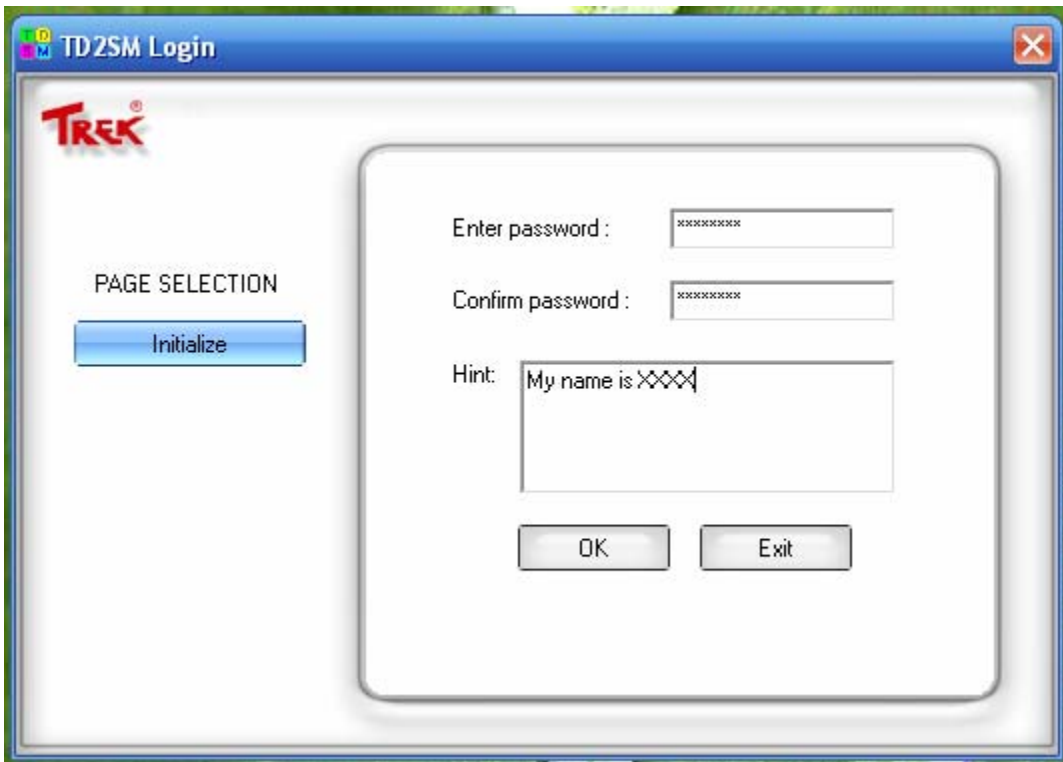
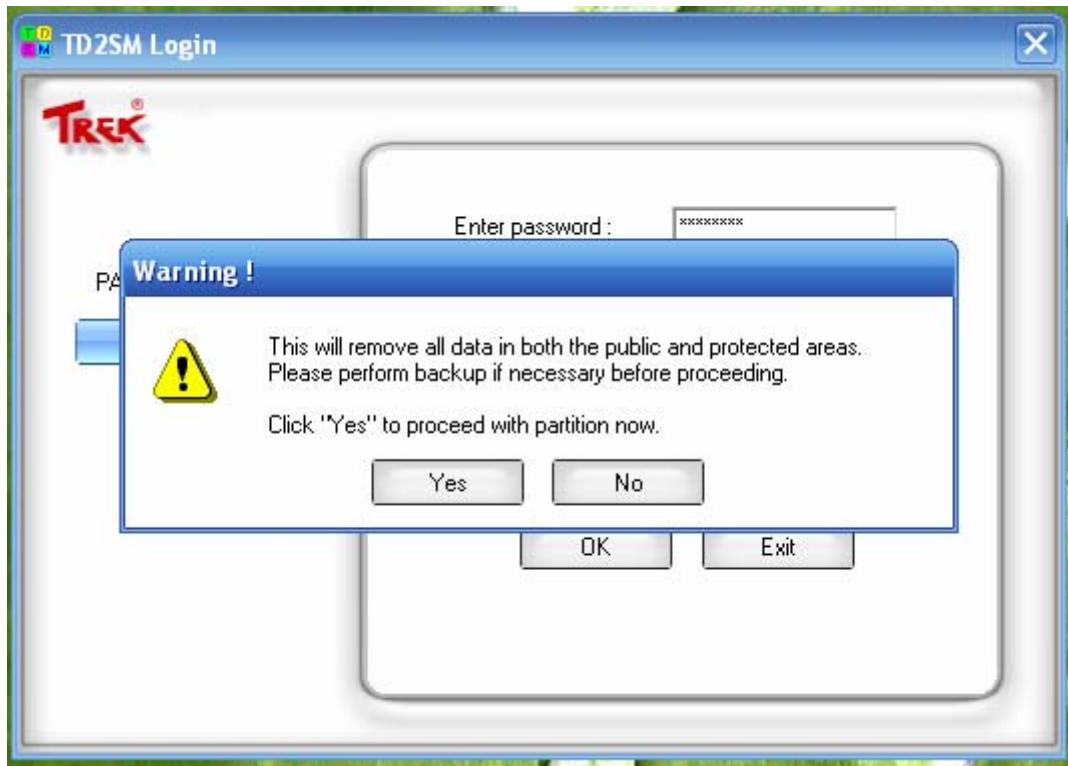




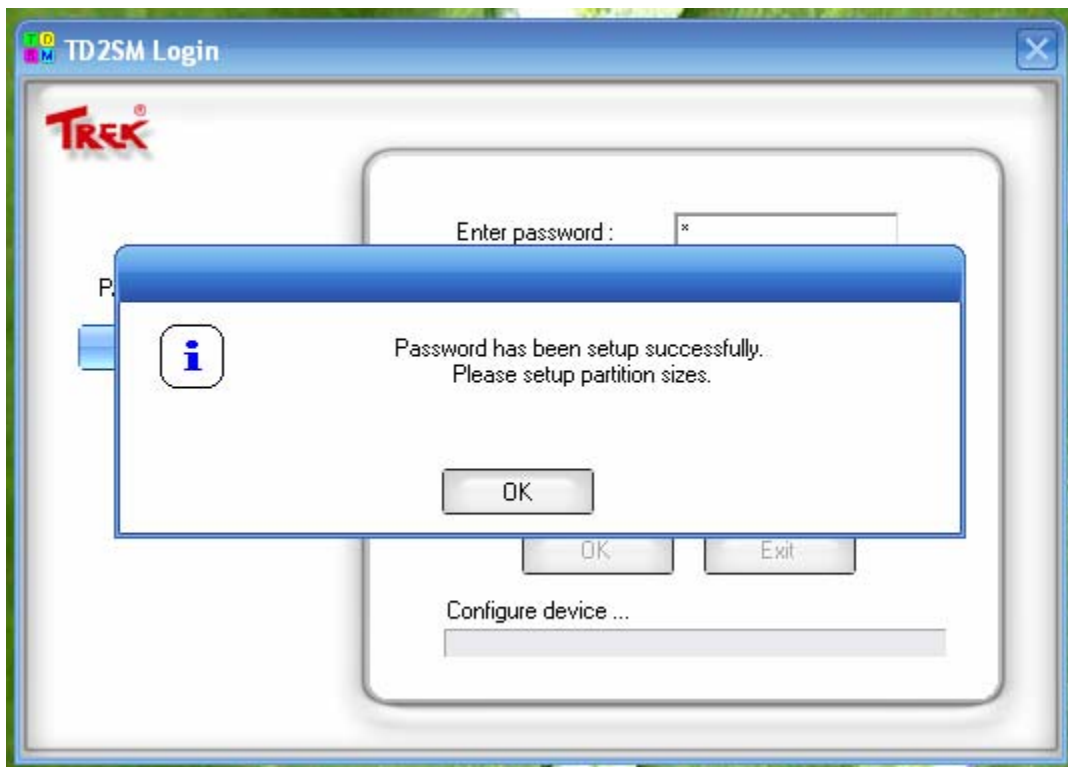
Press "Initialize" button



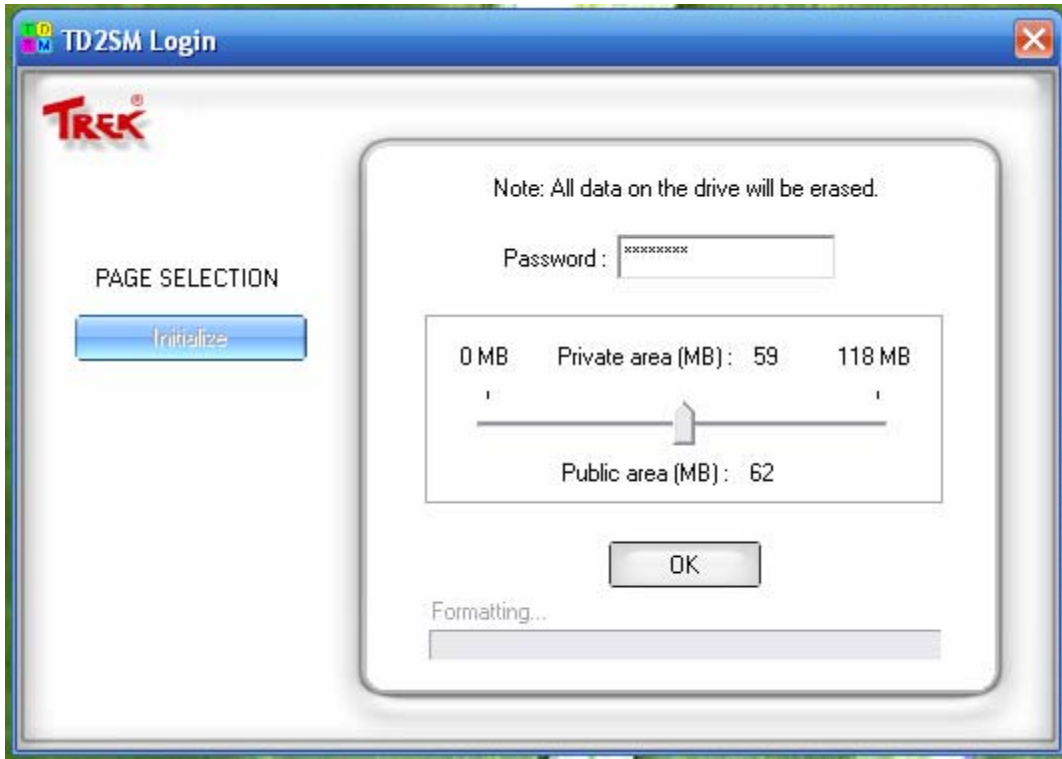
Enter "password" and "Hint" and then press "OK"



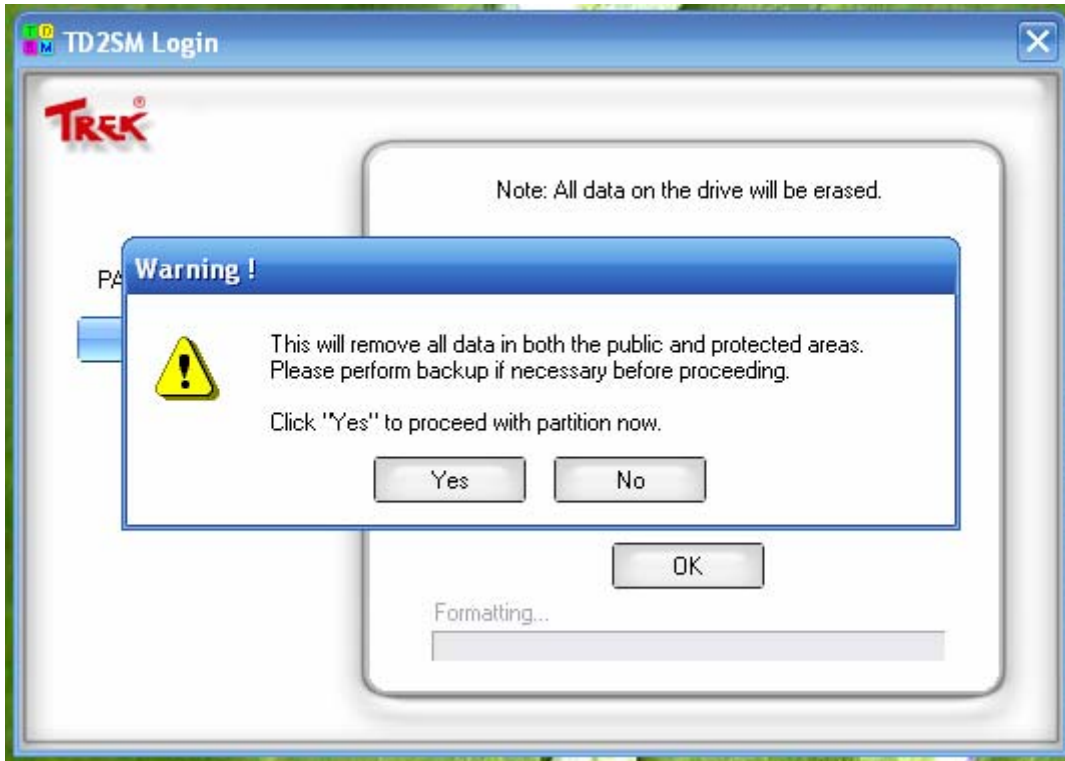
Press "Yes" to initialize the ThumbDrive



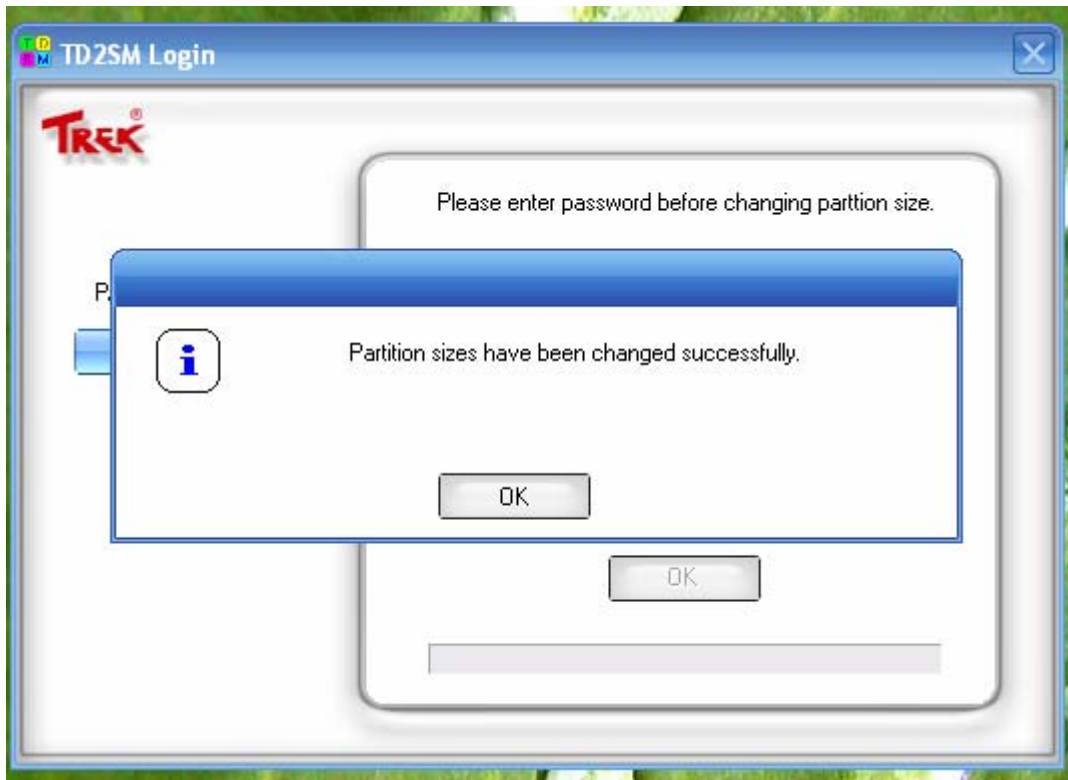
Press "OK" button to partition your ThumbDrive



Input your password and adjust the public area and private area.



Press "Yes" to partition the ThumbDrive



Press OK to continue



Next time when you need to access the protected area, just click the "Login Page" button and type in your password and press "Login" button.